

ARC HIT ECT URE

**& DESIGN,
INCORPORATED**
331 STATION STREET
MOBILE, ALABAMA 36688
P. 251-433-7888
F. 251-433-7889

**MIDTOWN PARK
BUSINESS CENTER**
PHASE I - BUILDING SHELL
MIDTOWN PARK EAST

**Sheet Title
PROPOSED
SITE
PLAN**

REVISIONS

No.	Date	Description

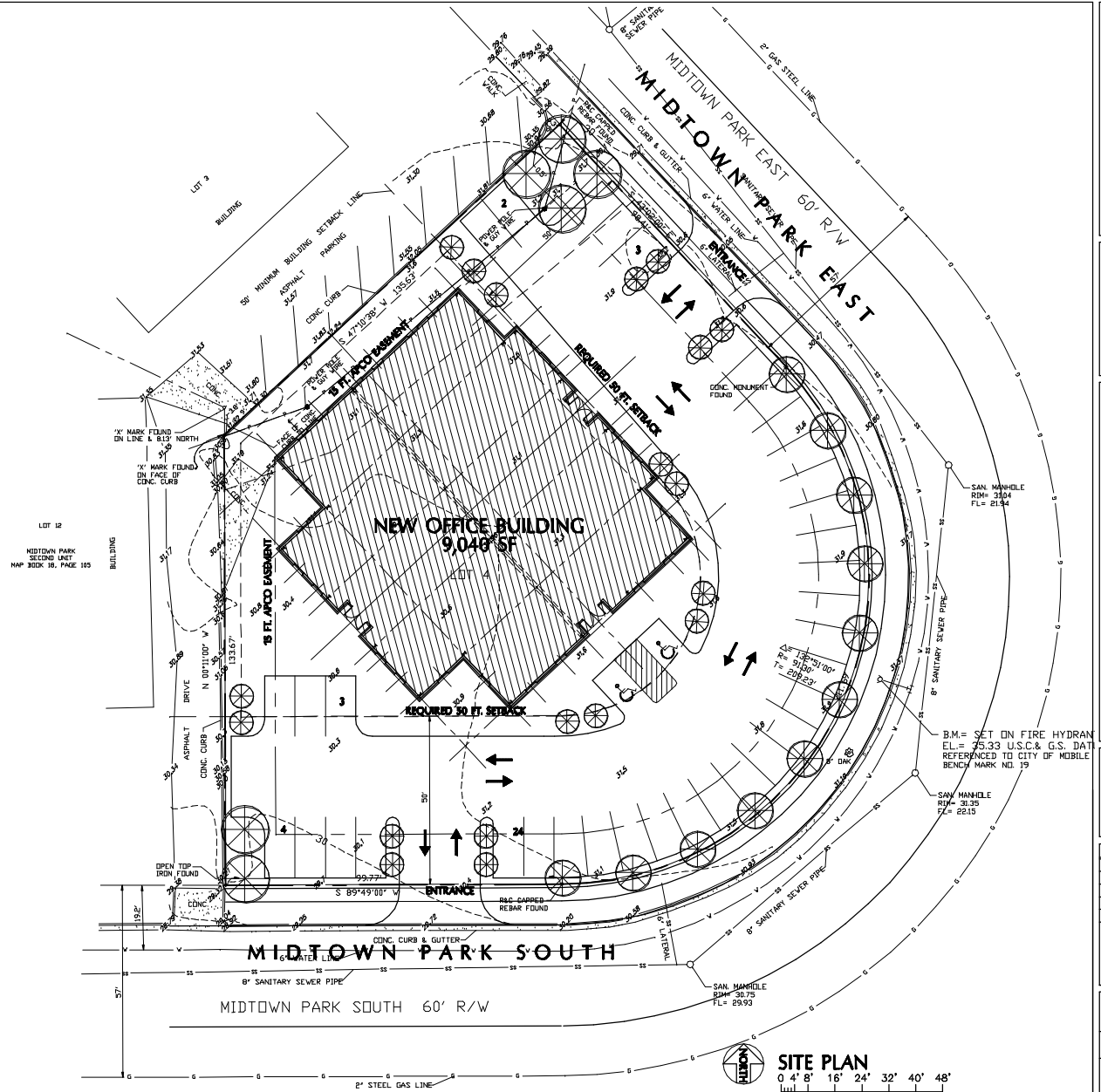
THIS DRAWING AND ITS REPRODUCTIONS ARE THE PROPERTY OF ARCHITECTURE & DESIGN, INC. AND MAY NOT BE REPRODUCED, PUBLISHED OR USED IN ANY WAY WITHOUT THE WRITTEN PERMISSION OF ARCHITECTURE & DESIGN, INC.

ARCHITECTURE & DESIGN, INC.
Project No. **2006-19**

Date **8 SEPTEMBER 2006**

Sheet No.

A1.0



SITE DATA

SITE SIZE	.74 ACRES (32,099 SF)
BUILDING SIZE	9,040 SF
PARKING REQUIRED	30 SPACES (1 SPACE PER 300 SF)
PARKING PROVIDED	38 SPACES (1.27 SPACES PER 300 SF) (1 SPACE PER 238 SF)

LANDSCAPING REQUIREMENTS

SITE SIZE: 32,099 SF (.74 ACRES)

REQUIRED LANDSCAPING:	REQUIRED	PROVIDED
12% OF TOTAL SITE AREA:	3,852 SF	5,369 SF
60% OF REQUIRED AREA BETWEEN BUILDING AND STREET	2,311 SF	4,533 SF
TREES REQUIRED		
HERITAGE TREES	19	19
UNDERSTORY TREES	7	12