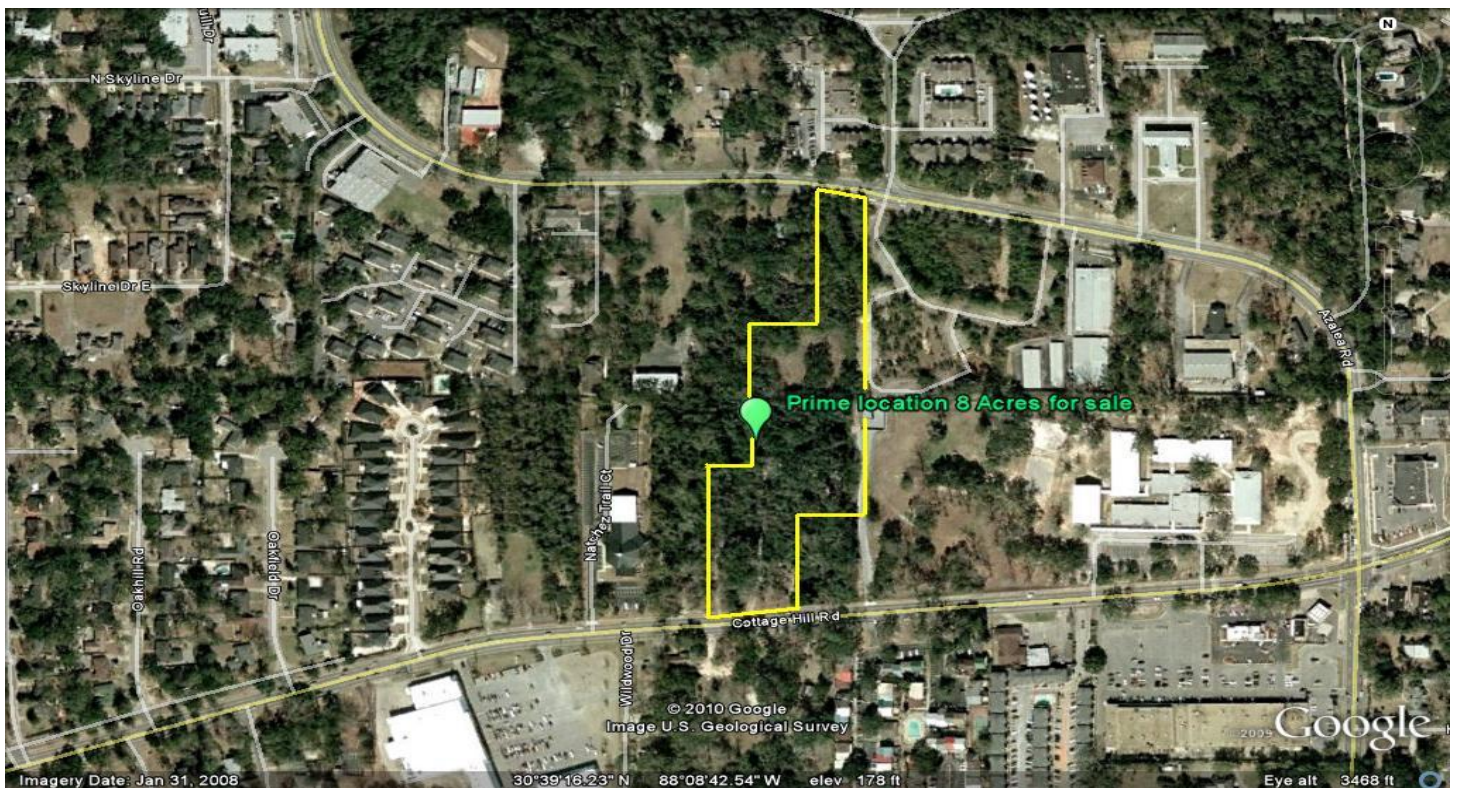


FOR SALE - PRIME COMMERCIAL LOT

Cottage Hill and Azalea Rd

- Prime Commercial Site with easy access to Interstates, downtown and West Mobile.
- 241' frontage on Cottage Hill Rd and 150' frontage on Azalea Rd.
- 8 Acres – High traffic area
- Available for sale for: \$965,000.00

This information is deemed reliable but may contain errors. The Owners reserve the right to change prices or withdraw property from the market at anytime. It is recommended that dimensions be verified by interested parties.



Contact: Gavin Bender, Sr.

Bender Real Estate Group

Tel: 251.445.2468

Fax: 251.445.2469

gavin@benderrealestategroup.com

917 Western America Circle

Suite 102

Mobile, AL 36609